

**STATE OF MONTANA
OFFICE OF THE GOVERNOR
EXECUTIVE ORDER No 21-2015**

EXECUTIVE ORDER 12/2015 *ERRATUM*

WHEREAS, Executive Order 10-2014 signed on September 9, 2014, included a map entitled “Sage-grouse Conservation Areas in Montana” as Attachment A;

WHEREAS, the Montana Department of Fish, Wildlife & Parks (FWP) has since completed a more thorough review of sage brush habitat suitable for sage grouse occupancy and created a more current and accurate map entitled “Sage-grouse Core Areas and General Habitat in Montana” and dated 9/4/2015 for purposes of implementing Executive Order 12-2015;

WHEREAS, the methodology and total number of acres designated as core habitat has not changed from the 2014 map to the map dated 9/4/15;

WHEREAS, Executive Order 12-2015 was signed on September 8, 2015, and erroneously included the 2014 map instead of the 9/4/15 map and this was a ministerial clerical mistake; and,

WHEREAS, Executive Order 12-2015 should have contained the map dated 9/4/15 at the time of signature on September 8, 2015.

NOW, THEREFORE, I, STEVE BULLOCK, Governor of the State of Montana, pursuant to the authority vested in me under the Constitution and the laws of the State of Montana, do hereby issue this *erratum* as follows:

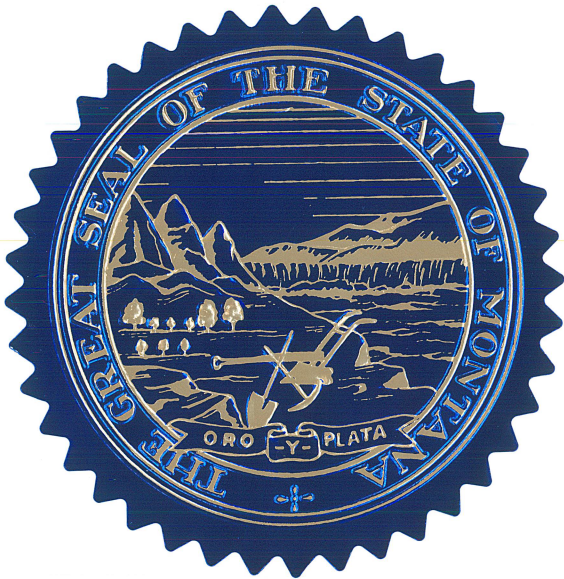
1. The 2014 map entitled Sage-grouse Conservation Areas in Montana included as Attachment A in Executive Order 12-2015 is hereby withdrawn and replaced with the map entitled Sage-grouse Core Areas and General Habitat in Montana dated 9/4/15 and attached to this Executive Order as Exhibit A.
2. Executive Order 12-2015 and all its requirements apply within the sage grouse core areas, general habitat, and connectivity area as depicted on the map entitled Sage-grouse Core Areas and General Habitat and dated 9/4/2015.
3. The Sage Grouse Habitat Conservation Program is directed to make the Sage-grouse Core Areas and General Habitat map dated 9/4/15 available on the Program’s website.
4. FWP is directed to make the spatial shapefile data used to create the 9/4/15 map available on its website, to remove from its website the spatial shapefile data used to create the now withdrawn 2014 map, and make other changes necessary to correct the error and facilitate implementation and compliance.

5. State agencies shall comply with Executive Order 12-2015 and apply the 9/4/15 map, as corrected by this *erratum*. The scope of this Executive Order is strictly limited to replacing the map where Executive Order 12-2015 applies. Compliance in all other respects is as set forth previously in Executive Order 12-2015.

DURATION

This Order is effective immediately and remains in effect until it is rescinded or superseded by subsequent Executive Order.

GIVEN under my hand and the GREAT SEAL of
the State of Montana this 31st day of
December, 2015.





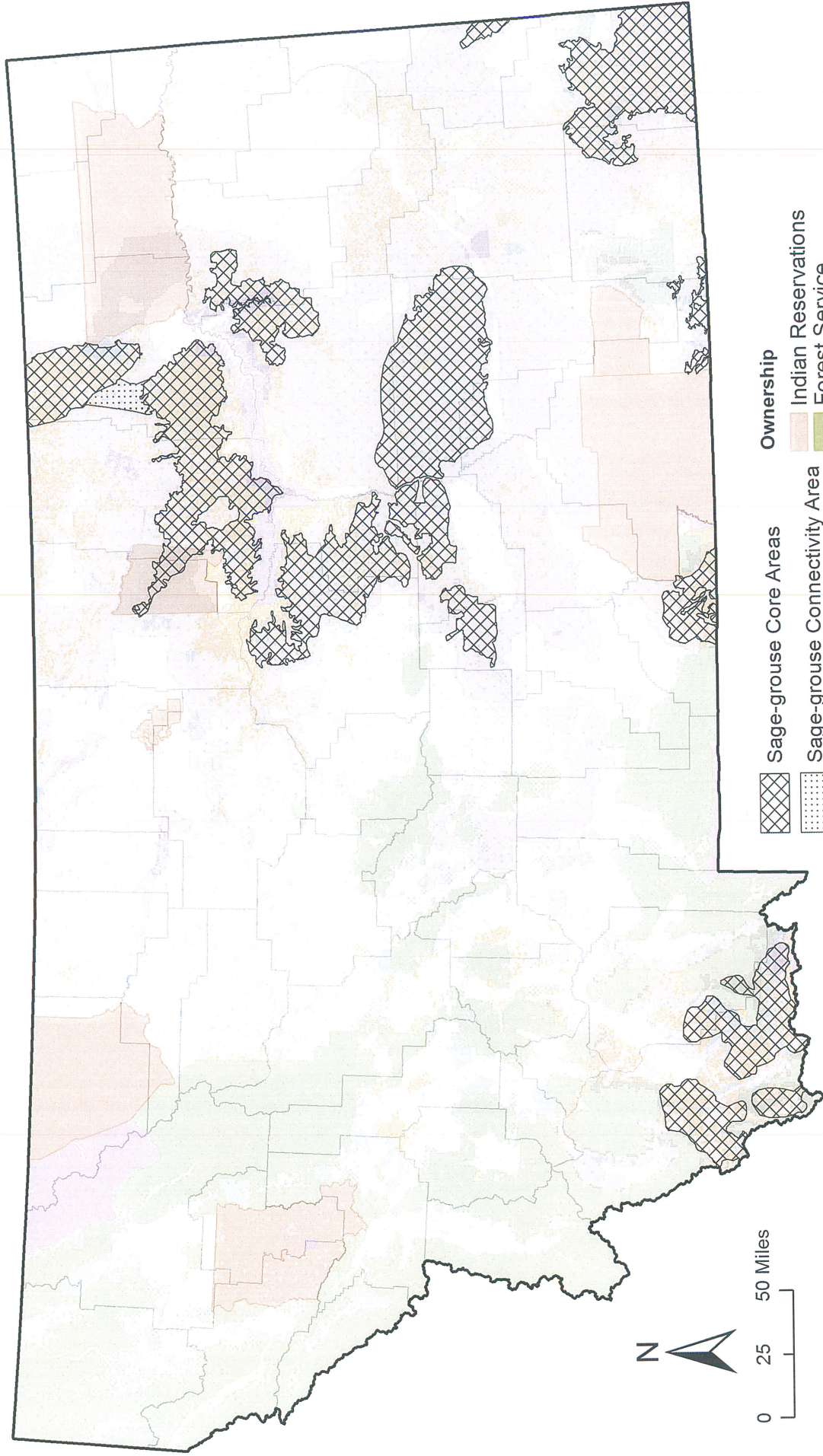
STEVE BULLOCK, Governor

ATTEST:


FOR: _____
LINDA MCCULLOCH, Secretary of State

- EXHIBIT A -

Sage-grouse Core Areas and General Habitat in Montana



0 25 50 Miles

- | | | | |
|---|-------------------------------|---|---------------------------|
|  | Sage-grouse Core Areas |  | Indian Reservations |
|  | Sage-grouse Connectivity Area |  | Forest Service |
|  | Sage-grouse General Habitat |  | Other Federal Lands |
| | |  | Bureau of Land Management |
| | |  | State and Local |

